

# SmartEval

---



An intelligent evaluation platform that enables **Screening, Evaluation,** and **Ranking** of a large number of job applications with the highest accuracy

## Key Features



Robust System



Single Collector –  
Multiple Merit Lists



Increased Validity of Candidate  
Selection/Ranking



Highly Configurable



Collector - Version control,  
Import, and Templates

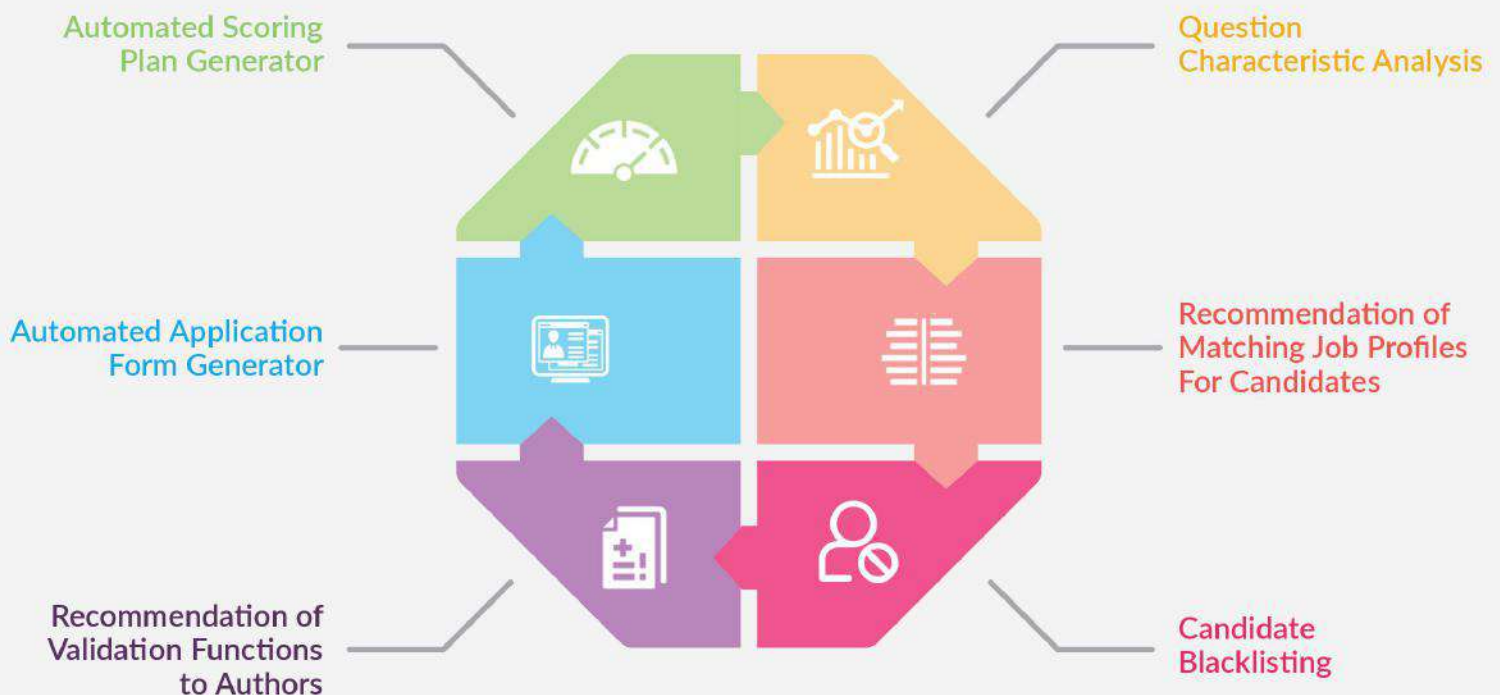


Anywhere, Anytime  
Questionnaire/ Exam Delivery



Document Upload along  
with submission

## “SMART” Components



## Collector Management

- › Build Job Analysis Questionnaires, Skill Inventories, Surveys, Training and Experience Exams
- › Organize collector into sections for contextual data collection processes ensuring ease of navigation and enhanced scoring capabilities
- › Fields that allow for multiple data elements and multiple entries
- › Preview capability along with score summary and score log
- › Field level property configuration to control and notify the candidates on wrong/mandatory data entries

## Scoring Plans

- › Create simple to complex scoring plans to score candidate responses based on business needs
- › Multiple scoring plans for a single collector
- › Support for questions that are not scored
- › Section level scoring (including minimum points, maximum points, bonus points, and more)
- › Question or section groups to allow for point allocation within a section, between sections, and between multiple groups
- › Allows scoring based on data validation
- › Formulae support to define custom validation functions which include all common operations (excel-type functionality)

## Exam Administration

- › Highly configurable exam administration
- › Allow applicants to save partially completed exams to return later (automatic saving between scenarios)
- › Enforce field level validations - data fields, email addresses
- › Response summary for exam-takers for review before final submission
- › Support for multiple submissions based on the configured policy
- › Support to delegate test delivery to a different organization
- › Establish defined dates or date ranges for the exam (including Exam without end dates for continuous recruitment)



## More Test & Evaluation Solutions



Comprehensive Online Assessment Platform for  
End-to-end Assessment Needs



AI-based Online Remote Proctoring Platform that offers an  
End-to-End, Cost Effective proctoring solution.



Excelsoft provides innovative technology-based solutions catering to the needs of corporations, educational publishers, schools, universities, government, and defense sectors. We architect, design, and develop learning environments, assessment tools, digital content, and product solutions for some of the best-known companies and academic institutions worldwide.

### Excelsoft Technologies Inc.

1 Broadway, 14th Floor,  
Cambridge, MA 02142

Call: +1-217-721-1903

Email: [sales@excelsoftcorp.com](mailto:sales@excelsoftcorp.com)

### Offices

USA | UK | UAE | Singapore | Malaysia | India

Scan to know More



[www.excelsoftcorp.com](http://www.excelsoftcorp.com)